



**CRYSTEX COMPOSITES LLC**

Mykroy/Mycalex® Ceramics  
 125 Clifton Boulevard, Clifton NJ. 07011  
 Phone: +1- 973-779-8866 Fax: +1-973-779-2013  
[www.mycalexinsulators.com](http://www.mycalexinsulators.com)



**MM60-75**

MYCALEX® stand-off insulator  
 Isolateur supports en MYCALEX®



**MM60-75**

Manufacturing process : TRANSFER MOLDING  
 Fabrication : MOULAGE TRANSFERT

Insert : Treated steel (Stainless steel on request)  
 Insert : Acier traité (Inox sur demande)

ROHS compliant (Pb Free)  
 Conforme directive ROHS (Sans plomb)

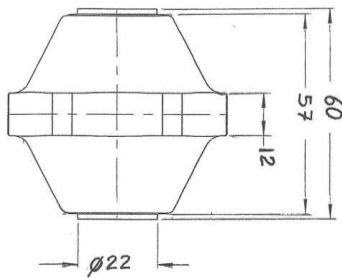
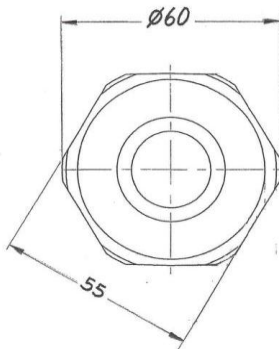
Extra smooth finish - No water absorption.  
 Finition extra lisse - pas d'absorption d'eau

Does not burn Compliant to NF F16-101  
 Ne brûle pas and NF F16-102

MATERIAL: Glass-Mica Ceramic  
 MATERIAU: Ceramique verre-mica

**Typical Applications:**

- Railway Motors
- Heater Systems
- Arc separators
- Switchgear chambers
- Insulation supports for HF windings
- And many others...
- Resistor Boxes
- Switchbox mountings
- Mountings for trolleys
- Overhead switch controls
- High temperature terminals



Part	Insert Type Male=M Female = F	Thread Pitch (mm)	Thread Depth (mm)	Pitch/Pas	Weight (kg)
MM60 M10	2F	M10	16	150	0.31
MM60 M14	2F	M14	16	200	0.31
MM60 M16	2F	M16	16	200	0.31

Male threaded rods can be added upon request  
 Inserts tige fileté sur demande.

Height/Hauteur	60mm ± 0.25mm
Diameter/Diamètre	60mm +0/-0.5mm
Hexagonal/Hexagonal	55mm +0/-0.5mm
Creepage distance/Ligne de fuite	75mm
<b>Mechanical Characteristics/Caract. Mécaniques</b>	
Tensile Strength/Résistance Traction	≥1800 daN
End flexural strength/Résistance flexion en tête	≥615 daN
Compressive strength/Résistance compression	≥7000 daN
Torsion/Résistance torsion 10/14/16	>60/110/140 Nm
<b>Electrical Characteristics/Caract. Électriques</b>	
Arc over voltage/Tension de contournement	≥30 kV
Breakdown voltage/Tension de perforation	≥35 kV
Insulation resistance/Résistance d'isolement	>200 GΩ
Capacitance (1KHz)/Capacité (1KHz)	7.5 pF
<b>Test Conditions/ Conditions d'essais</b>	
Voltage/Tension	27kV
Frequency/Fréquence	60Hz
Duration/Durée	1 min.
Temperature	20°C
Humidity	65%

To the best of our knowledge the information contained herein is accurate; however, Crystex Composites LLC does not accept any liability regarding the accuracy or completeness of such information. Purchaser has the sole responsibility in determining the suitability of any material described herein for the use contemplated and the processing of such material by purchaser

**MYCALEX INSULATORS**