



## CRYSTEX COMPOSITES LLC

MYCALEX Insulators

125 Clifton Boulevard, Clifton NJ. 07011

Phone: 973-779-8866 Fax: 973-779-2013 [www.crystexcomposites.com](http://www.crystexcomposites.com)



### MM50

MYCALEX® stand-off insulator  
Isolateur supports en MYCALEX®



### MM50

Manufacturing process : TRANSFER MOLDING  
Fabrication : MOULAGE TRANSFERT

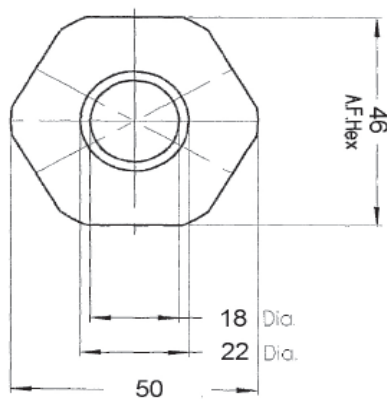
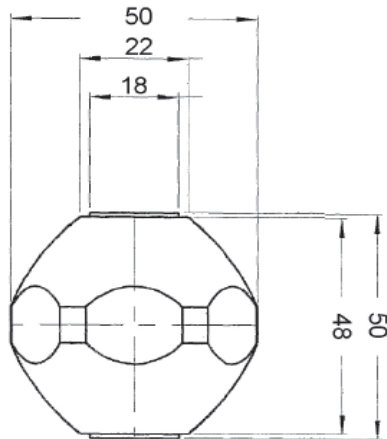
Insert : Treated steel (Stainless steel on request)  
Insert : Acier traité (Inox sur demande)

ROHS compliant (Pb Free)  
Conforme directive ROHS (Sans plomb)

Extra smooth finish - No water absorption.  
Finition extra lisse - pas d'absorption d'eau

Does not burn Compliant to NF F16-101  
Ne brûle pas and NF F16-102

MATERIAL: Glass-Mica Ceramic  
MATÉRIAU: Céramique verre-mica



#### Typical Applications:

Railway Motors	Resistor Boxes
Heater Systems	Switchbox mountings
Arc separators	Mountings for trolleys
Switchgear chambers	Overhead switch controls
Insulation supports for HF windings	High temperature terminals
And many others...	

Part	Insert Type Male=M Female = F	Thread Pitch (mm)	Thread Depth (mm)	Pitch/Pas	Weight (kg)
MM50 M10	2 F	M10	12	150	0.19
MM50 M12	2F	M12	12	175	0.19

Male threaded rods can be added upon request  
Inserts tige fileté sur demande.

Height/Hauteur	50mm ± 0.25mm
Diameter/Diamètre	50mm +0/0.5mm
Hexagonal/Hexagonal	46mm +0/-0.5mm
Creepage distance/Ligne de fuite	60mm
<b>Mechanical Characteristics/Caract. Mécaniques</b>	
Tensile Strength/Résistance Traction	≥1500 daN
End flexural strength/Résistance flexion en tête	≥450 daN
Compressive strength/Résistance compression	≥7000 daN
Torsion/Résistance torsion	>9.0 daN-m
<b>Electrical Characteristics/Caract. Electriques</b>	
Arc over voltage/Tension de contournement	≥26kV
Breakdown voltage/Tension de perforation	≥22 kV
Insulation resistance/Résistance d'isolement	>200 GΩ
Capacitance (1KHz)/Capacité (1KHz)	6.5 pF
<b>Test Conditions/ Conditions d'essais</b>	
Voltage/Tension	22kV
Frequency/Fréquence	60Hz
Duration/Durée	1 min.
Temperature	20°C
Humidity	65%

To the best of our knowledge the information contained herein is accurate; however, Crystex Composites LLC does not accept any liability regarding the accuracy or completeness of such information. Purchaser has the sole responsibility in determining the suitability of any material described herein for the use contemplated and the processing of such material by purchaser

MYCALEX INSULATORS